

# california

HOME+DESIGN

chdmag.com

## THE LIVE/ WORK ISSUE

PEEK INSIDE  
THE HOMES  
OF THE PROS

**PLUS**  
DESIGNERS  
TAKE ON THE  
LIFELESS  
RENTAL

Design icon Stanley  
Abercrombie shows  
off his studio  
in Sonoma,  
p. 104.

RTLE MEDIA CHDMAG.COM APRIL 2010 \$4.95

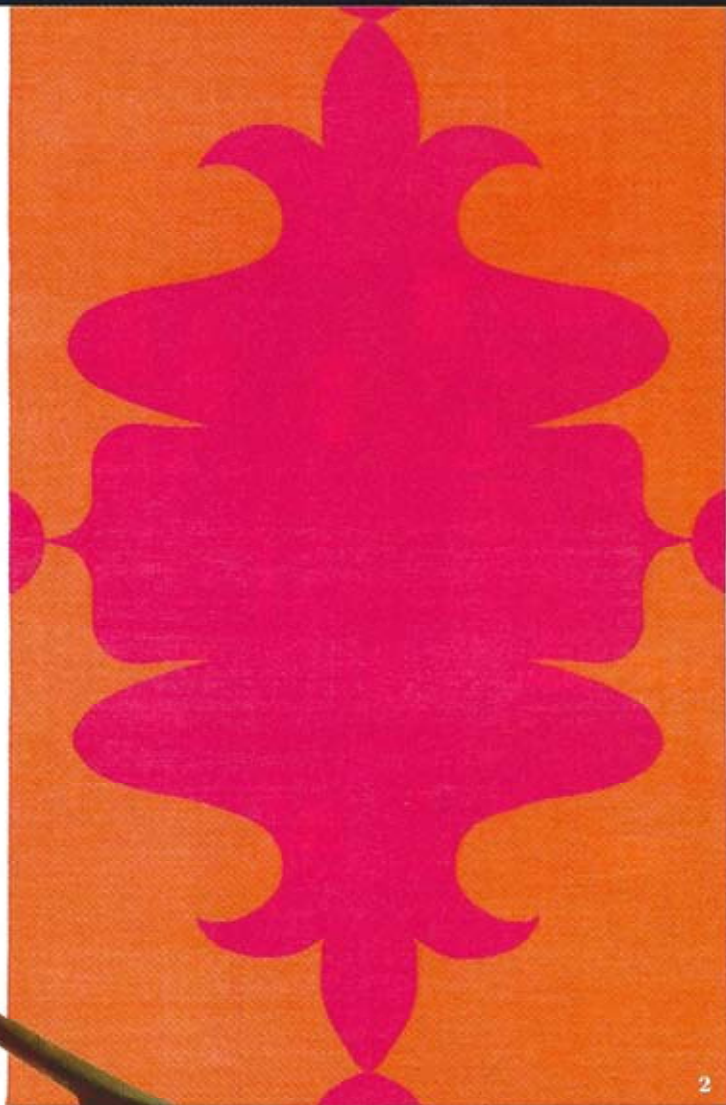


04

# PAST, PRESENT, FUCHSIA

Designers have adapted the hottest hue of fashion's spring collections for the home, launching timeless pieces into the future.

BY ANGELICA MADUELL



1



3



4

1. The sleek **Stance chair** by Los Angeles designer John Neiro of Just Not Normal pairs walnut with dyed cowhide ([justnotnormal.us](http://justnotnormal.us)). 2. Lotus Bleu is the exclusive West Coast dealer of the cotton dhurrie-weave **Orleans rug** by Madeline Weinrib (available in seven sizes; \$350–\$2,250; [lotusbleudesign.com](http://lotusbleudesign.com)). 3. Z Gallerie's handcrafted metal **Casablanca lantern** comes in two sizes, 10 or 18 inches tall (\$8, \$15; [zgallerie.com](http://zgallerie.com)). 4. New York City sculptor Michelle Jaffé designed the **Fjord Collection**, a series of felt nesting bowls, for Artware Editions (\$250/set of three; [artwareeditions.com](http://artwareeditions.com)). See Resource Guide, p. 114.